

# RUBIMIX-16 ERGOMAX



Ref.explod 91739

02-02

03/02/2015

Product. 24994, 24995, 24996, 24997, 24998, 24999

Part-list			ES	EN	DE	FR
1	24345	12	TORN ST3,9X14	SCREW ST3,9X14	SCREW ST3,9X14	SCREW ST3,9X14
2	24346	1	TAPA MOTOR TRASERA RUBIMIX-16 ERGOMAX	REAR COVER RUBIMIX-16 ERGOMAX	REAR COVER RUBIMIX-16 ERGOMAX	REAR COVER RUBIMIX-16 ERGOMAX
3	24347	1	TAPA VENTILACION RUBIMIX-16 ERGOMAX	AIR GUIDE COVER RUBIMIX-16 ERGOMAX	AIR GUIDE COVER RUBIMIX-16 ERGOMAX	AIR GUIDE COVER RUBIMIX-16 ERGOMAX
4	24348	1	MANGO PLAST.SUPERIOR RUBIMIX-16 ERGOMAX	TOP PLASTIC HANDLE RUBIMIX-16 ERGOMAX	TOP PLASTIC HANDLE RUBIMIX-16 ERGOMAX	TOP PLASTIC HANDLE RUBIMIX-16 ERGOMAX
5	24349	1	ABRAZADERA POS.5 RUBIMIX-16 ERGOMAX	CLAMP BOARD RUBIMIX-16 ERGOMAX	CLAMP BOARD RUBIMIX-16 ERGOMAX	CLAMP BOARD RUBIMIX-16 ERGOMAX
6	24350	1	TUERCA M8 RUBIMIX-16 ERGOMAX	NUT M8 RUBIMIX-16 ERGOMAX	NUT M8 RUBIMIX-16 ERGOMAX	NUT M8 RUBIMIX-16 ERGOMAX
7	24351	1	POMO ABRAZADERA RUBIMIX-16 ERGOMAX	CLAMP KNOB RUBIMIX-16 ERGOMAX	CLAMP KNOB RUBIMIX-16 ERGOMAX	CLAMP KNOB RUBIMIX-16 ERGOMAX
8	24352	2	FIJACION ABRAZADERA RUBIMIX-16 ERGOMAX	CLAMP MAT RUBIMIX-16 ERGOMAX	CLAMP MAT RUBIMIX-16 ERGOMAX	CLAMP MAT RUBIMIX-16 ERGOMAX
9	24353	1	MANGO PLAST.INFERIOR RUBIMIX-16 ERGOMAX	UNDER PLASTIC HANDLE RUBIMIX-16 ERGOMAX	UNDER PLASTIC HANDLE RUBIMIX-16 ERGOMAX	UNDER PLASTIC HANDLE RUBIMIX-16 ERGOMAX
10	24354	17	TORN ST3,9X16	SCREW ST3,9X16	SCREW ST3,9X16	SCREW ST3,9X16
11	24355	2	TAPA ESCOBILLA RUBIMIX-16 ERGOMAX	BRUSHER COVER RUBIMIX-16 ERGOMAX	BRUSHER COVER RUBIMIX-16 ERGOMAX	BRUSHER COVER RUBIMIX-16 ERGOMAX
12	24356	2	ESCOBILLA RUBIMIX-16 ERGOMAX 230V	CARBON BRUSHER RUBIMIX-16 ERGOMAX 230V	CARBON BRUSHER RUBIMIX-16 ERGOMAX 230V	CARBON BRUSHER RUBIMIX-16 ERGOMAX 230V
12	24407	2	ESCOBILLA RUBIMIX-16 ERGOMAX 110V	CARBON BRUSHER RUBIMIX-16 ERGOMAX 110V	CARBON BRUSHER RUBIMIX-16 ERGOMAX 110V	CARBON BRUSHER RUBIMIX-16 ERGOMAX 110V
13	24357	2	PORTAESCOBILLAS RUBIMIX-16 ERGOMAX	BRUSHER HOLDER RUBIMIX-16 ERGOMAX	BRUSHER HOLDER RUBIMIX-16 ERGOMAX	BRUSHER HOLDER RUBIMIX-16 ERGOMAX
14	24358	1	CARCASA MOTOR RUBIMIX-16 ERGOMAX	MOTOR HOUSE RUBIMIX-16 ERGOMAX	MOTOR HOUSE RUBIMIX-16 ERGOMAX	MOTOR HOUSE RUBIMIX-16 ERGOMAX
15	24408	1	ESTATOR RUBIMIX-16 ERGOMAX 110V	STATOR RUBIMIX-16 ERGOMAX 110V	STATOR RUBIMIX-16 ERGOMAX 110V	STATOR RUBIMIX-16 ERGOMAX 110V
15	24359	1	ESTATOR RUBIMIX-16 ERGOMAX 230V	STATOR RUBIMIX-16 ERGOMAX 230V	STATOR RUBIMIX-16 ERGOMAX 230V	STATOR RUBIMIX-16 ERGOMAX 230V
16	24360	2	TORN ST4,8X60	SCREW ST4,8X60	SCREW ST4,8X60	SCREW ST4,8X60
17	24361	1	ANILLO VENTILACION MOTOR RMIX-16 ERGOMAX	MOTOR WIND RING RUBIMIX-16 ERGOMAX	MOTOR WIND RING RUBIMIX-16 ERGOMAX	MOTOR WIND RING RUBIMIX-16 ERGOMAX
18	24362	1	SOPORTE RODAMIENTO RUBIMIX-16 ERGOMAX	BEARING HOLDER RUBIMIX-16 ERGOMAX	BEARING HOLDER RUBIMIX-16 ERGOMAX	BEARING HOLDER RUBIMIX-16 ERGOMAX
19	24363	1	RODAMIENTO 608 RUBIMIX-16 ERGOMAX	BEARING 608 RUBIMIX-16 ERGOMAX	BEARING 608 RUBIMIX-16 ERGOMAX	BEARING 608 RUBIMIX-16 ERGOMAX
20	24364	1	ROTOR RUBIMIX-16 ERGOMAX 230V	ROTOR RUBIMIX-16 ERGOMAX 230V	ROTOR RUBIMIX-16 ERGOMAX 230V	ROTOR RUBIMIX-16 ERGOMAX 230V
20	24409	1	ROTOR RUBIMIX-16 ERGOMAX 110V	ROTOR RUBIMIX-16 ERGOMAX 110V	ROTOR RUBIMIX-16 ERGOMAX 110V	ROTOR RUBIMIX-16 ERGOMAX 110V
21	24365	1	RODAMIENTO 6001 RUBIMIX-16 ERGOMAX	BEARING 6001 RUBIMIX-16 ERGOMAX	BEARING 6001 RUBIMIX-16 ERGOMAX	BEARING 6001 RUBIMIX-16 ERGOMAX
22	24366	1	MUELLE POS.22 RUBIMIX-16 ERGOMAX	SPRING POS.22 RUBIMIX-16 ERGOMAX	SPRING POS.22 RUBIMIX-16 ERGOMAX	SPRING POS.22 RUBIMIX-16 ERGOMAX
23	24367	1	TORN M4X14	SCREW M4X14	SCREW M4X14	SCREW M4X14
24	24368	1	REGULADOR VELOCIDAD RUBIMIX-16 ERGOMAX	KNOB SPEED SHIFT RUBIMIX-16 ERGOMAX	KNOB SPEED SHIFT RUBIMIX-16 ERGOMAX	KNOB SPEED SHIFT RUBIMIX-16 ERGOMAX
25	24369	2	BOLA ACERO 4.0 RUBIMIX-16 ERGOMAX	STEEL BALL 4.0 RUBIMIX-16 ERGOMAX	STEEL BALL 4.0 RUBIMIX-16 ERGOMAX	STEEL BALL 4.0 RUBIMIX-16 ERGOMAX
26	24370	2	MUELLE POS.26 RUBIMIX-16 ERGOMAX	SPRING POS.26 RUBIMIX-16 ERGOMAX	SPRING POS.26 RUBIMIX-16 ERGOMAX	SPRING POS.26 RUBIMIX-16 ERGOMAX

Queda reservado el derecho de introducir cualquier modificacion técnica sin previo aviso

We reserve the right to introduce any technical modification without previous notice

Wir behalten uns das Recht vor, jede notwendige technische Änderung ohne vorherige Ankündigung an unseren Produkten vorzunehmen.

Il est réservé le droit à introduire une modification technique sans préavis.

# RUBIMIX-16 ERGOMAX



Ref.explod 91739 02-02 03/02/2015 Product. 24994, 24995, 24996, 24997, 24998, 24999

27	24371	1	ANILLO ELASTICO 28MM	CIRCLIP 28MM	CIRCLIP 28MM	CIRCLIP 28MM
28	24372	1	EJE REGULADOR VELOCIDAD RMIX-16 ERGOMAX	SPEED SHIFT POLE RUBIMIX-16 ERGOMAX	SPEED SHIFT POLE RUBIMIX-16 ERGOMAX	SPEED SHIFT POLE RUBIMIX-16 ERGOMAX
29	24373	1	TAPA ACEITE 21X26X5 RUBIMIX-16 ERGOMAX	FRAME OIL COVER 21X26X5 RMIX-16 ERGOMAX	FRAME OIL COVER 21X26X5 RMIX-16 ERGOMAX	FRAME OIL COVER 21X26X5 RMIX-16 ERGOMAX
30	24374	4	TORN ST4,8X55	SCREW ST4,8X55	SCREW ST4,8X55	SCREW ST4,8X55
31	24375	1	CAJA ENGRANAJES RUBIMIX-16 ERGOMAX	GEAR BOX RUBIMIX-16 ERGOMAX	GEAR BOX RUBIMIX-16 ERGOMAX	GEAR BOX RUBIMIX-16 ERGOMAX
32	24376	1	PRISIONERO 4H 8X8	PIN4H 8X8	PIN4H 8X8	PIN4H 8X8
33	24377	4	RODAMIENTO 628/8 RUBIMIX-16 ERGOMAX	BEARING 628/8 RUBIMIX-16 ERGOMAX	BEARING 628/8 RUBIMIX-16 ERGOMAX	BEARING 628/8 RUBIMIX-16 ERGOMAX
34	24378	1	ENGRANAJE INICIAL CL.III RMIX-16 ERGOMAX	INITIATIVE GEAR CL.III RMIX-16 ERGOMAX	INITIATIVE GEAR CL.III RMIX-16 ERGOMAX	INITIATIVE GEAR CL.III RMIX-16 ERGOMAX
35	24379	1	ENGRANAJE TRANSM.CL.III RMIX-16 ERGOMAX	DRIVEN GEAR CL.III RMIX-16 ERGOMAX	DRIVEN GEAR CL.III RMIX-16 ERGOMAX	DRIVEN GEAR CL.III RMIX-16 ERGOMAX
36	24380	1	ENGRANAJE TRANSM.CL.II RMIX-16 ERGOMAX	DRIVEN GEAR CL.II RMIX-16 ERGOMAX	DRIVEN GEAR CL.II RMIX-16 ERGOMAX	DRIVEN GEAR CL.II RMIX-16 ERGOMAX
37	24411	1	CABLE ENCHUFE RMIX-16 ERGOMAX 230V BS	POWER CORD RUBIMIX-16 ERGOMAX 230V BS	POWER CORD RUBIMIX-16 ERGOMAX 230V BS	POWER CORD RUBIMIX-16 ERGOMAX 230V BS
37	24412	1	CABLE ENCHUFE RMIX-16 ERGOMAX 110V UK	POWER CORD RUBIMIX-16 ERGOMAX 110V UK	POWER CORD RUBIMIX-16 ERGOMAX 110V UK	POWER CORD RUBIMIX-16 ERGOMAX 110V UK
37	24410	1	CABLE ENCHUFE RMIX-16 ERGOMAX 110V USA	POWER CORD RUBIMIX-16 ERGOMAX 110V USA	POWER CORD RUBIMIX-16 ERGOMAX 110V USA	POWER CORD RUBIMIX-16 ERGOMAX 110V USA
37	24381	1	CABLE ENCHUFE RMIX-16 ERGOMAX 230V VDE	POWER CORD RUBIMIX-16 ERGOMAX 230V VDE	POWER CORD RUBIMIX-16 ERGOMAX 230V VDE	POWER CORD RUBIMIX-16 ERGOMAX 230V VDE
38	24382	1	FUNDA CABLE RUBIMIX-16 ERGOMAX	CORD SHEATH RUBIMIX-16 ERGOMAX	CORD SHEATH RUBIMIX-16 ERGOMAX	CORD SHEATH RUBIMIX-16 ERGOMAX
39	24383	1	JUNTA CABLE ENCHUFE RUBIMIX-16 ERGOMAX	CORD BOARD RUBIMIX-16 ERGOMAX	CORD BOARD RUBIMIX-16 ERGOMAX	CORD BOARD RUBIMIX-16 ERGOMAX
40	24384	1	INTERRUPTOR RUBIMIX-16 ERGOMAX	SWITCH CONTROL RUBIMIX-16 ERGOMAX	SWITCH CONTROL RUBIMIX-16 ERGOMAX	SWITCH CONTROL RUBIMIX-16 ERGOMAX
41	24385	1	CONDENSADOR RUBIMIX-16 ERGOMAX	CAPACITOR RUBIMIX-16 ERGOMAX	CAPACITOR RUBIMIX-16 ERGOMAX	CAPACITOR RUBIMIX-16 ERGOMAX
42	24386	1	MUELLE CABLE RUBIMIX-16 ERGOMAX	SPRING WIRE RUBIMIX-16 ERGOMAX	SPRING WIRE RUBIMIX-16 ERGOMAX	SPRING WIRE RUBIMIX-16 ERGOMAX
43	24387	1	FUNDA CABLE PEQUEÑA RUBIMIX-16 ERGOMAX	SMALL CORD SHEATH RUBIMIX-16 ERGOMAX	SMALL CORD SHEATH RUBIMIX-16 ERGOMAX	SMALL CORD SHEATH RUBIMIX-16 ERGOMAX
44	24388	1	TAPA VENTILACION RUBIMIX-16 ERGOMAX	WIND COVER RUBIMIX-16 ERGOMAX	WIND COVER RUBIMIX-16 ERGOMAX	WIND COVER RUBIMIX-16 ERGOMAX
45	24389	3	TORN M4X6	SCREW M4X6	SCREW M4X6	SCREW M4X6
46	24390	1	TAPA MOTOR RUBIMIX-16 ERGOMAX	MOTOR COVER RUBIMIX-16 ERGOMAX	MOTOR COVER RUBIMIX-16 ERGOMAX	MOTOR COVER RUBIMIX-16 ERGOMAX
47	24391	2	VARILLA ACEITE RUBIMIX-16 ERGOMAX	OIL BAR RUBIMIX-16 ERGOMAX	OIL BAR RUBIMIX-16 ERGOMAX	OIL BAR RUBIMIX-16 ERGOMAX
48	24392	1	ARAND TAPA ACEITE RUBIMIX-16 ERGOMAX	OIL COVER WASHER RUBIMIX-16 ERGOMAX	OIL COVER WASHER RUBIMIX-16 ERGOMAX	OIL COVER WASHER RUBIMIX-16 ERGOMAX
49	24393	1	TAPA ACEITE RUBIMIX-16 ERGOMAX	OIL COVER RUBIMIX-16 ERGOMAX	OIL COVER RUBIMIX-16 ERGOMAX	OIL COVER RUBIMIX-16 ERGOMAX
50	24394	4	ARAND 3 RUBIMIX-16 ERGOMAX	WASHER FLAT 3.0 RUBIMIX-16 ERGOMAX	WASHER FLAT 3.0 RUBIMIX-16 ERGOMAX	WASHER FLAT 3.0 RUBIMIX-16 ERGOMAX
51	24395	4	ARAND GROWER 3 RUBIMIX-16 ERGOMAX	SPRING WASHER 3.0 RUBIMIX-16 ERGOMAX	SPRING WASHER 3.0 RUBIMIX-16 ERGOMAX	SPRING WASHER 3.0 RUBIMIX-16 ERGOMAX
52	24396	4	TORN M3X10	SCREW M3X10	SCREW M3X10	SCREW M3X10
53	24397	1	RODAMIENTO HK1010 RUBIMIX-16 ERGOMAX	BEARING HK1010 RUBIMIX-16 ERGOMAX	BEARING HK1010 RUBIMIX-16 ERGOMAX	BEARING HK1010 RUBIMIX-16 ERGOMAX

Queda reservado el derecho de introducir cualquier modificacion técnica sin previo aviso  
We reserve the right to introduce any technical modification without previous notice

Wir behalten uns das Recht vor, jede notwendige technische Änderung ohne vorherige Ankündigung an unseren Produkten vorzunehmen.  
Il est réservé le droit à introduire une modification technique sans préavis.

# RUBIMIX-16 ERGOMAX



Ref.explod 91739 02-02 03/02/2015 Product. 24994, 24995, 24996, 24997, 24998, 24999

54	24398	1	ANILLO ELASTICO 15MM	CIRCLIP 15MM	CIRCLIP 15MM	CIRCLIP 15MM
55	24399	1	ENGRANAJE GRANDE RUBIMIX-16 ERGOMAX	BIG GEAR RUBMIX-16 ERGOMAX	BIG GEAR RUBMIX-16 ERGOMAX	BIG GEAR RUBMIX-16 ERGOMAX
56	24400	1	ANILLO ELASTICO 17MM	CIRCLIP 17MM	CIRCLIP 17MM	CIRCLIP 17MM
57	24401	1	ANILLO ELASTICO 35MM	CIRCLIP 35MM	CIRCLIP 35MM	CIRCLIP 35MM
58	24402	1	ANILLO ELASTICO 10MM	CIRCLIP 10MM	CIRCLIP 10MM	CIRCLIP 10MM
59	24403	1	RODAMIENTO 6003 RUBIMIX-16 ERGOMAX	BEARING 6003 RUBMIX-16 ERGOMAX	BEARING 6003 RUBMIX-16 ERGOMAX	BEARING 6003 RUBMIX-16 ERGOMAX
60	24404	1	ENGRANAJE TRANSM.CL.I RMIX-16 ERGOMAX	DRIVEN GEAR CL.I RMIX-16 ERGOMAX	DRIVEN GEAR CL.I RMIX-16 ERGOMAX	DRIVEN GEAR CL.I RMIX-16 ERGOMAX
61	24405	1	EJE ENGRANAJE CL.II RMIX-16 ERGOMAX	GEAR SHAFT CL.II RMIX-16 ERGOMAX	GEAR SHAFT CL.II RMIX-16 ERGOMAX	GEAR SHAFT CL.II RMIX-16 ERGOMAX
62	24406	1	PASADOR RUBIMIX-16 ERGOMAX	SPINDLE RUBIMIX-16 ERGOMAX	SPINDLE RUBIMIX-16 ERGOMAX	SPINDLE RUBIMIX-16 ERGOMAX
63	25702	1	MALETA RMIX-16 ERGOMAX	CASE RMIX-16 ERGOMAX	CASE RMIX-16 ERGOMAX	CASE RMIX-16 ERGOMAX

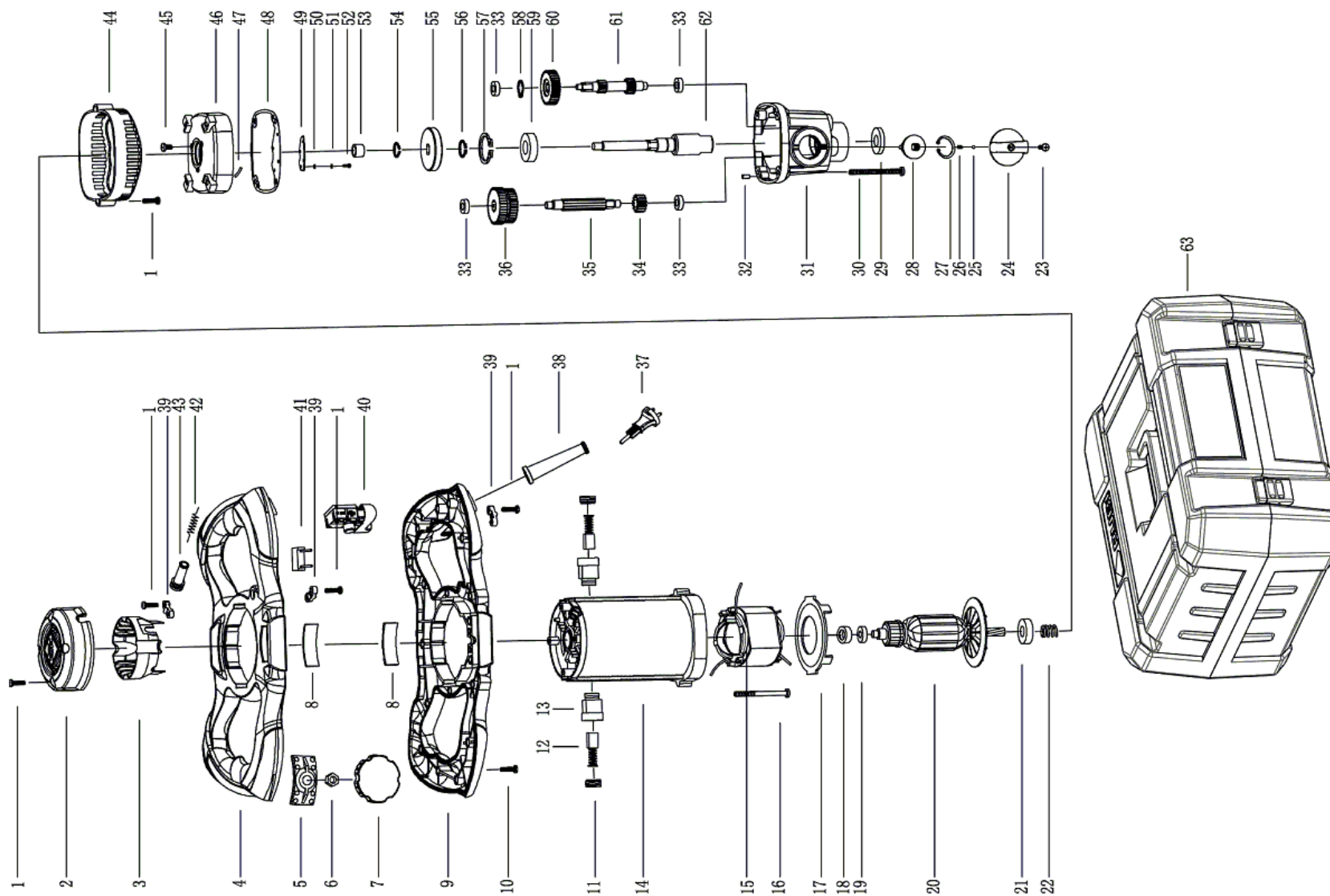
# RUBIMIX-16 ERGOMAX

Ref.explod 91739

02-02

03/02/2015

Product. 24994, 24995, 24996, 24997, 24998, 24999



Queda reservado el derecho de introducir cualquier modificacion técnica sin previo aviso  
We reserve the right to introduce any technical modification without previous notice

Wir behalten uns das Recht vor, jede notwendige technische Änderung ohne vorherige Ankündigung an unseren Produkten vorzunehmen.  
Il est réservé le droit à introduire une modification technique sans préavis.